

SR 65

WOOD COUNTY
S.H. 53 SECTIONS C & B (PART)
R/W PLANS

1/9

R/W OK as shown
easement. Handle. Don.
F.J.F.
4/5/44

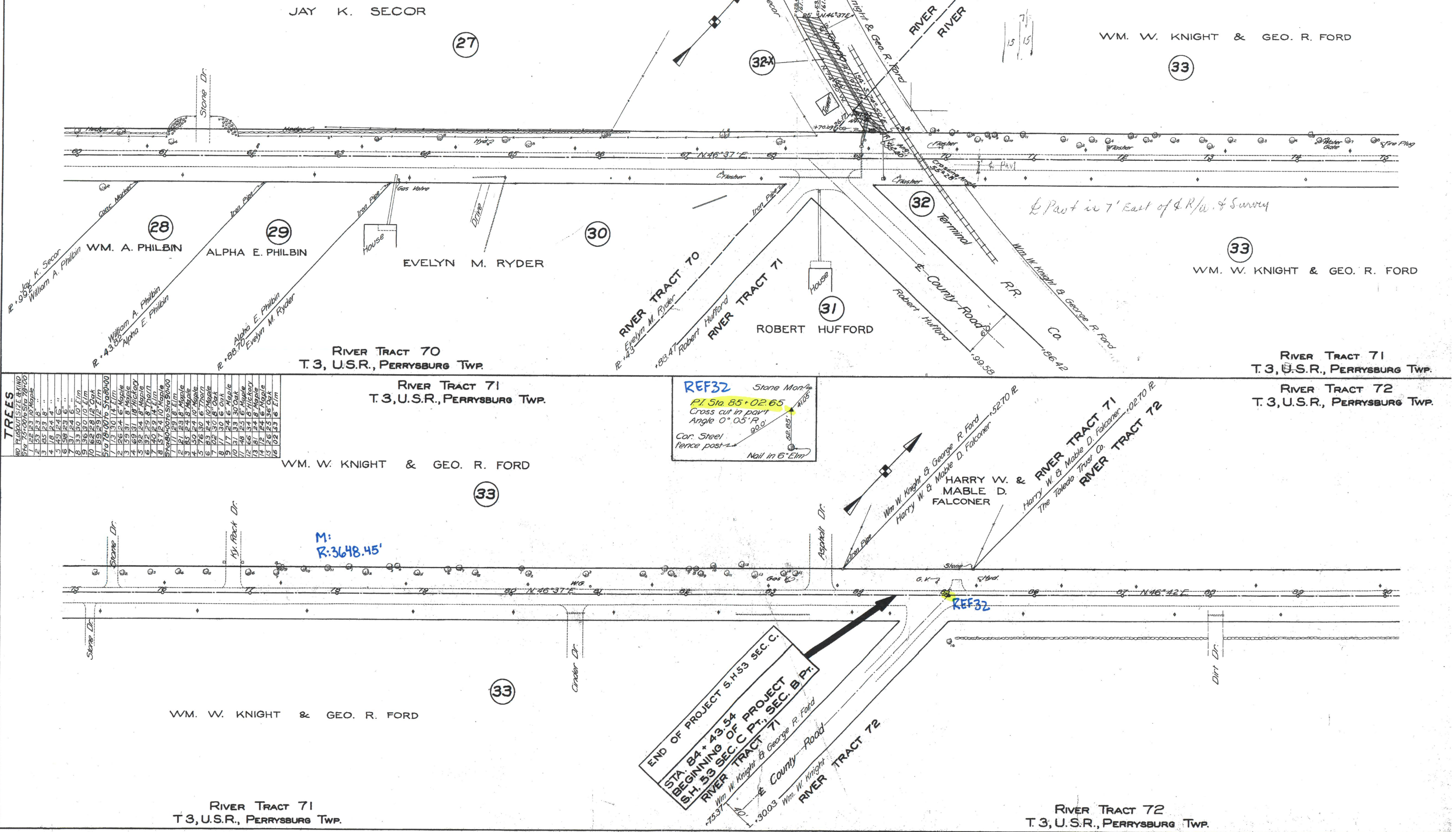
STATE OF OHIO
DEPARTMENT OF HIGHWAYS
RIGHT OF WAY PLANS
TOLEDO~GRAND RAPIDS ROAD
S.H. 53 SECTIONS C & B (PART)
WOOD COUNTY

Scanned
July 1997

R-8065 # 5 D-5

Surveyed
July 1947

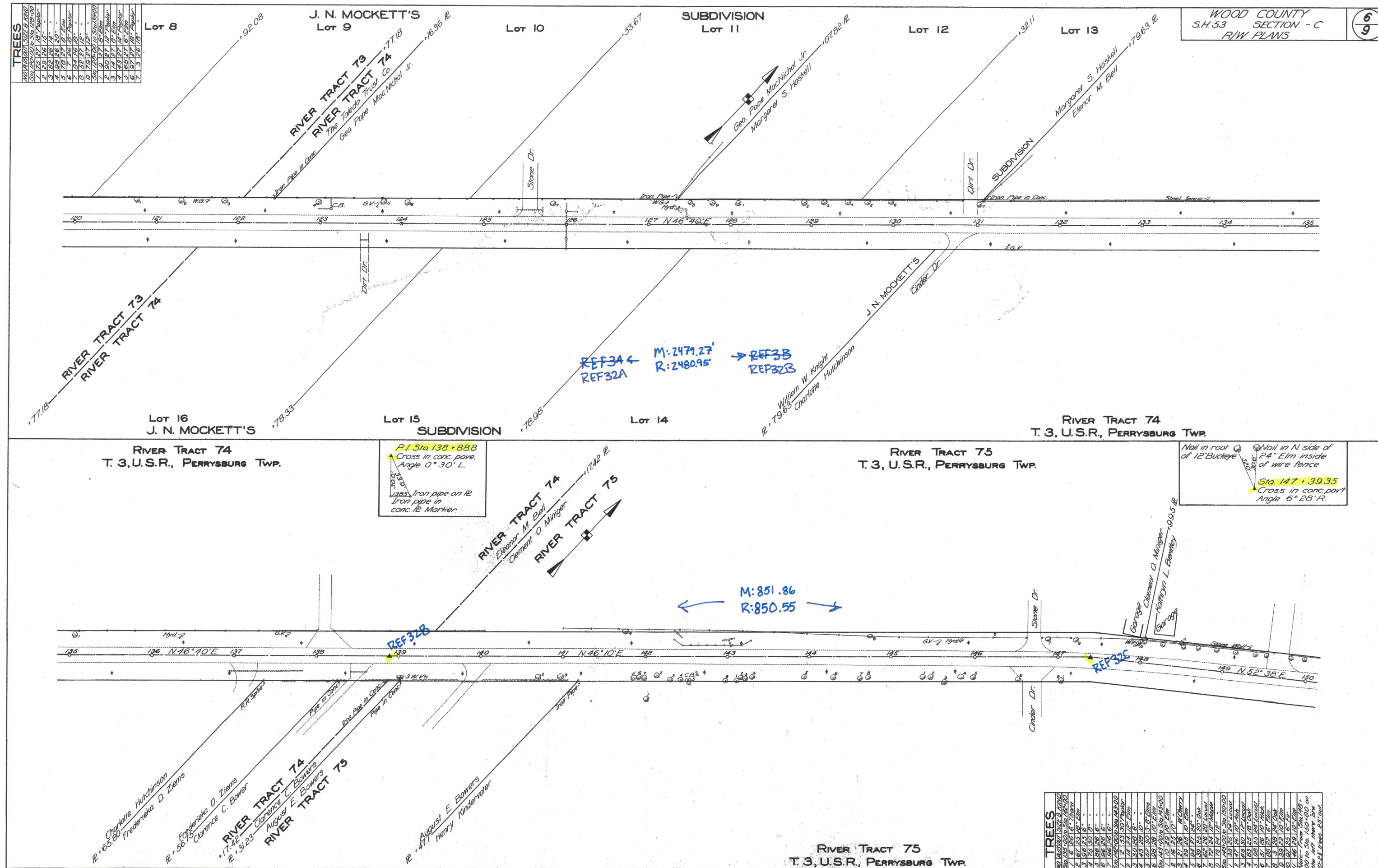
TREES	
NO.	PLANT SIZE & KIND
1	60' 100' 75' 50' 100'
2	30 30 30 30 30
3	30 30 30 30 30
4	30 30 30 30 30
5	30 30 30 30 30
6	30 30 30 30 30
7	30 30 30 30 30
8	30 30 30 30 30
9	30 30 30 30 30
10	30 30 30 30 30
11	30 30 30 30 30
12	30 30 30 30 30
13	30 30 30 30 30
14	30 30 30 30 30
15	30 30 30 30 30
16	30 30 30 30 30
17	30 30 30 30 30
18	30 30 30 30 30
19	30 30 30 30 30
20	30 30 30 30 30
21	30 30 30 30 30
22	30 30 30 30 30
23	30 30 30 30 30
24	30 30 30 30 30
25	30 30 30 30 30
26	30 30 30 30 30
27	30 30 30 30 30
28	30 30 30 30 30
29	30 30 30 30 30
30	30 30 30 30 30
31	30 30 30 30 30
32	30 30 30 30 30
33	30 30 30 30 30
34	30 30 30 30 30
35	30 30 30 30 30
36	30 30 30 30 30
37	30 30 30 30 30
38	30 30 30 30 30
39	30 30 30 30 30
40	30 30 30 30 30
41	30 30 30 30 30
42	30 30 30 30 30
43	30 30 30 30 30
44	30 30 30 30 30
45	30 30 30 30 30
46	30 30 30 30 30
47	30 30 30 30 30
48	30 30 30 30 30
49	30 30 30 30 30
50	30 30 30 30 30
51	30 30 30 30 30
52	30 30 30 30 30
53	30 30 30 30 30
54	30 30 30 30 30
55	30 30 30 30 30
56	30 30 30 30 30
57	30 30 30 30 30
58	30 30 30 30 30
59	30 30 30 30 30
60	30 30 30 30 30



Scanned
July 1997

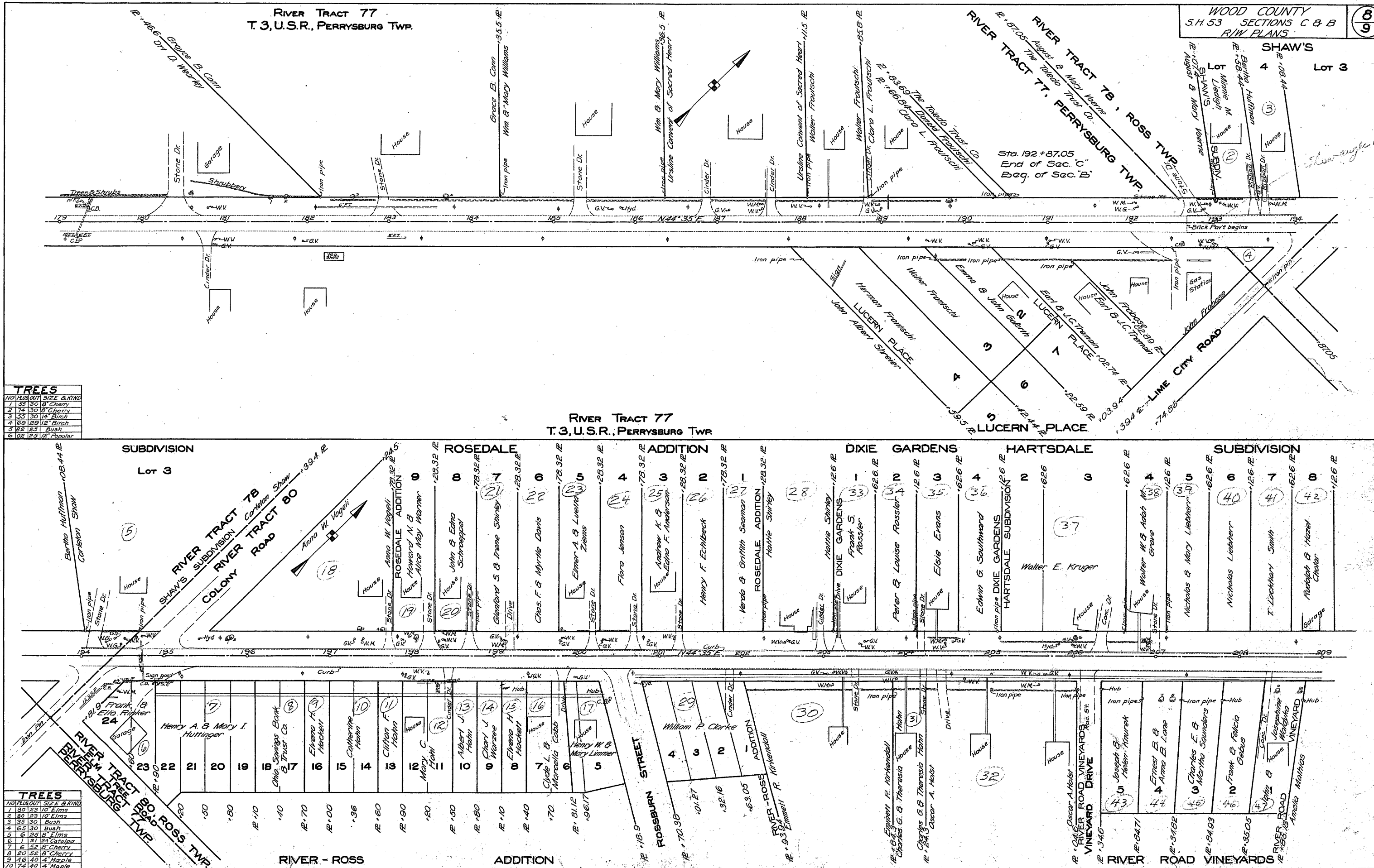
TREES	
NO. IN LOT	SIZE IN INCHES
1	10" Oak
2	12" Oak
3	14" Oak
4	16" Oak
5	18" Oak
6	20" Oak
7	22" Oak
8	24" Oak
9	26" Oak
10	28" Oak
11	30" Oak
12	32" Oak
13	34" Oak
14	36" Oak
15	38" Oak
16	40" Oak
17	42" Oak
18	44" Oak
19	46" Oak
20	48" Oak
21	50" Oak
22	52" Oak
23	54" Oak
24	56" Oak
25	58" Oak
26	60" Oak
27	62" Oak
28	64" Oak
29	66" Oak
30	68" Oak
31	70" Oak
32	72" Oak
33	74" Oak
34	76" Oak
35	78" Oak
36	80" Oak
37	82" Oak
38	84" Oak
39	86" Oak
40	88" Oak
41	90" Oak
42	92" Oak
43	94" Oak
44	96" Oak
45	98" Oak
46	100" Oak
47	102" Oak
48	104" Oak
49	106" Oak
50	108" Oak
51	110" Oak
52	112" Oak
53	114" Oak
54	116" Oak
55	118" Oak
56	120" Oak
57	122" Oak
58	124" Oak
59	126" Oak
60	128" Oak
61	130" Oak
62	132" Oak
63	134" Oak
64	136" Oak
65	138" Oak
66	140" Oak
67	142" Oak
68	144" Oak
69	146" Oak
70	148" Oak
71	150" Oak
72	152" Oak
73	154" Oak
74	156" Oak
75	158" Oak
76	160" Oak
77	162" Oak
78	164" Oak
79	166" Oak
80	168" Oak
81	170" Oak
82	172" Oak
83	174" Oak
84	176" Oak
85	178" Oak
86	180" Oak
87	182" Oak
88	184" Oak
89	186" Oak
90	188" Oak
91	190" Oak
92	192" Oak
93	194" Oak
94	196" Oak
95	198" Oak
96	200" Oak
97	202" Oak
98	204" Oak
99	206" Oak
100	208" Oak
101	210" Oak
102	212" Oak
103	214" Oak
104	216" Oak
105	218" Oak
106	220" Oak
107	222" Oak
108	224" Oak
109	226" Oak
110	228" Oak
111	230" Oak
112	232" Oak
113	234" Oak
114	236" Oak
115	238" Oak
116	240" Oak
117	242" Oak
118	244" Oak
119	246" Oak
120	248" Oak
121	250" Oak
122	252" Oak
123	254" Oak
124	256" Oak
125	258" Oak
126	260" Oak
127	262" Oak
128	264" Oak
129	266" Oak
130	268" Oak
131	270" Oak
132	272" Oak
133	274" Oak
134	276" Oak
135	278" Oak
136	280" Oak
137	282" Oak
138	284" Oak
139	286" Oak
140	288" Oak
141	290" Oak
142	292" Oak
143	294" Oak
144	296" Oak
145	298" Oak
146	300" Oak
147	302" Oak
148	304" Oak
149	306" Oak
150	308" Oak
151	310" Oak
152	312" Oak
153	314" Oak
154	316" Oak
155	318" Oak
156	320" Oak
157	322" Oak
158	324" Oak
159	326" Oak
160	328" Oak
161	330" Oak
162	332" Oak
163	334" Oak
164	336" Oak
165	338" Oak
166	340" Oak
167	342" Oak
168	344" Oak
169	346" Oak
170	348" Oak
171	350" Oak
172	352" Oak
173	354" Oak
174	356" Oak
175	358" Oak
176	360" Oak
177	362" Oak
178	364" Oak
179	366" Oak
180	368" Oak
181	370" Oak
182	372" Oak
183	374" Oak
184	376" Oak
185	378" Oak
186	380" Oak
187	382" Oak
188	384" Oak
189	386" Oak
190	388" Oak
191	390" Oak
192	392" Oak
193	394" Oak
194	396" Oak
195	398" Oak
196	400" Oak
197	402" Oak
198	404" Oak
199	406" Oak
200	408" Oak
201	410" Oak
202	412" Oak
203	414" Oak
204	416" Oak
205	418" Oak
206	420" Oak
207	422" Oak
208	424" Oak
209	426" Oak
210	428" Oak
211	430" Oak
212	432" Oak
213	434" Oak
214	436" Oak
215	438" Oak
216	440" Oak
217	442" Oak
218	444" Oak
219	446" Oak
220	448" Oak
221	450" Oak
222	452" Oak
223	454" Oak
224	456" Oak
225	458" Oak
226	460" Oak
227	462" Oak
228	464" Oak
229	466" Oak
230	468" Oak
231	470" Oak
232	472" Oak
233	474" Oak
234	476" Oak
235	478" Oak
236	480" Oak
237	482" Oak
238	484" Oak
239	486" Oak
240	488" Oak
241	490" Oak
242	492" Oak
243	494" Oak
244	496" Oak
245	498" Oak
246	500" Oak
247	502" Oak
248	504" Oak
249	506" Oak
250	508" Oak
251	510" Oak
252	512" Oak
253	514" Oak
254	516" Oak
255	518" Oak
256	520" Oak
257	522" Oak
258	524" Oak
259	526" Oak
260	528" Oak
261	530" Oak
262	532" Oak
263	534" Oak
264	536" Oak
265	538" Oak
266	540" Oak
267	542" Oak
268	544" Oak
269	546" Oak
270	548" Oak
271	550" Oak
272	552" Oak
273	554" Oak
274	556" Oak
275	558" Oak
276	560" Oak
277	562" Oak
278	564" Oak
279	566" Oak
280	568" Oak
281	570" Oak
282	572" Oak
283	574" Oak
284	576" Oak
285	578" Oak
286	580" Oak
287	582" Oak
288	584" Oak
289	586" Oak
290	588" Oak
291	590" Oak
292	592" Oak
293	594" Oak
294	596" Oak
295	598" Oak
296	600" Oak
297	602" Oak
298	604" Oak
299	606" Oak
300	608" Oak
301	610" Oak
302	612" Oak
303	614" Oak
304	616" Oak
305	618" Oak
306	620" Oak
307	622" Oak
308	624" Oak
309	626" Oak
310	628" Oak
311	630" Oak
312	632" Oak
313	634" Oak
314	636" Oak
315	638" Oak
316	640" Oak
317	642" Oak
318	644" Oak
319	646" Oak
320	648" Oak
321	650" Oak
322	652" Oak
323	654" Oak
324	656" Oak
325	658" Oak
326	660" Oak
327	662" Oak
328	664" Oak
329	666" Oak
330	668" Oak
331	670" Oak
332	672" Oak
333	674" Oak
334	676" Oak
335	678" Oak
336	680" Oak
337	682" Oak
338	684" Oak
339	686" Oak
340	688" Oak
341	690" Oak
342	692" Oak
343	694" Oak
344	696" Oak
345	698" Oak
346	700" Oak
347	702" Oak
348	704" Oak
349	706" Oak
350	708" Oak
351	710" Oak
352	712" Oak
353	714" Oak
354	716" Oak
355	718" Oak
356	720" Oak
357	722" Oak
358	724" Oak
359	726" Oak
360	728" Oak
361	730" Oak
362	732" Oak
363	734" Oak
364	736" Oak
365	738" Oak
366	740" Oak
367	742" Oak
368	744" Oak
369	746" Oak
370	748" Oak
371	750" Oak
372	752" Oak
373	754" Oak
374	756" Oak
375	758" Oak
376	760" Oak
377	762" Oak
378	764" Oak
379	766" Oak
380	768" Oak
381	770" Oak
382	772" Oak
383	774" Oak
384	776" Oak
385	778" Oak
386	780" Oak
387	782" Oak
388	784" Oak
389	786" Oak
390	788" Oak
391	790" Oak
392	792" Oak
393	794" Oak
394	796" Oak
395	798" Oak
396	800" Oak
397	802" Oak
398	804" Oak
399	806" Oak
400	808" Oak
401	810" Oak
402	812" Oak
403	814" Oak
404	816" Oak
405	818" Oak
406	820" Oak
407	822" Oak
408	824" Oak
409	826" Oak
410	828" Oak
411	830" Oak
412	832" Oak
413	834" Oak
414	836" Oak
415	838" Oak
416	840" Oak
417	842" Oak
418	844" Oak
419	846" Oak
420	848" Oak
421	850" Oak
422	852" Oak
423	854" Oak
424	856" Oak
425	858" Oak
426	860" Oak
427	862" Oak
428	864" Oak
429	866" Oak
430	868" Oak
431	870" Oak
432	872" Oak
433	874" Oak
434	876" Oak
435	878" Oak
436	880" Oak
437	882" Oak
438	884" Oak
439	886" Oak
440	888" Oak
441	890" Oak
442	892" Oak
443	894" Oak
444	896" Oak
445	898" Oak
446	900" Oak
447	902" Oak
448	904" Oak
449	906" Oak
450	908" Oak
451	910" Oak
452	912" Oak
453	914" Oak
454	916" Oak
455	918" Oak
456	920" Oak
457	922" Oak
458	924" Oak
459	926" Oak
460	928" Oak
461	930" Oak
462	932" Oak
463	934" Oak
464	936" Oak
465	938" Oak
466	940" Oak
467	942" Oak
468	944" Oak
469	946" Oak
470	948" Oak
471	950" Oak
472	952" Oak
473	954" Oak
474	956" Oak
475	958" Oak
476	960" Oak
477	962" Oak
478	964" Oak
479	966" Oak
480	968" Oak
481	970" Oak
482	972" Oak
483	974" Oak
484	976" Oak
485	978" Oak
486	980" Oak
487	982" Oak
488	984" Oak
489	986" Oak
490	988" Oak
491	990" Oak
492	992" Oak
493	994" Oak
494	996" Oak
495	998" Oak
496	1000" Oak
497	1002" Oak
498	1004" Oak
499	1006" Oak
500	1008" Oak
501	1010" Oak
502	1012" Oak
503	1014" Oak
504	1016" Oak
505	1018" Oak
506	1020" Oak
507	1022" Oak
508	1024" Oak
509	1026" Oak
510	1028" Oak
511	1030" Oak
512	1032" Oak
513	1034" Oak
514	1036" Oak
515	1038" Oak
516	1040" Oak
517	1042" Oak
518	1044" Oak
519	1046" Oak
520	1048" Oak
521	1050" Oak
522	1052" Oak
523	1054" Oak
524	1056" Oak
525	1058" Oak
526	1060" Oak
527	1062" Oak
528	1064" Oak
529	1066" Oak
530	1068" Oak
531	1070" Oak
532	1072" Oak
533	1074" Oak
534	1076" Oak
535	1078" Oak
536	1080" Oak
537	1082" Oak
538	1084" Oak
539	1086" Oak
540	1088" Oak
541	1090" Oak
542	1092" Oak
543	1094" Oak
544	1096" Oak
545	1098" Oak
546	1100" Oak
547	1102" Oak
548	1104" Oak
549	1106" Oak
550	1108" Oak
551	1110" Oak
552	1112" Oak
553	1114" Oak
554	1116" Oak
555	1118" Oak
556	1120" Oak
557	1122" Oak
558	1124" Oak
559	1126" Oak
560	1128" Oak
561	1130" Oak
562	

TREES	
AGE	HEIGHT, SIZE & REMARKS
1	Sta. 120 to Sta. 129
1	7' 3" 21' 13" Apple
2	2' 2" 26' 15" "
3	3' 6' 26' 14" "
4	5' 9' 26' 20" "
5	7' 9' 27' 8" Elm
6	7' 26' 18" Apple
7	8' 24' 26' 18" "
8	5' 52' 27' 12" "
9	7' 9' 27' 12" "
1	Sta. 130 to Sta. 135/100
1	9' 27' 8" Elm
2	9' 27' 12" Apple
3	14' 27' 8" Elm
4	27' 14" Apple
5	6' 27' 6" Elm
6	9' 27' 18" Apple
7	3' 26' 18" Apple

 $\frac{6}{9}$ 



Scanned
July 1997



TREES	
NO.	PLANT SIZE & KIND
1	35' 30" B' Cherry
2	74' 30" B' Cherry
3	35' 30" B' Birch
4	69' 29" B' Birch
5	22' 25" Bush
6	02' 25" B' Poplar

TREES	
NO.	PLANT SIZE & KIND
1	80' 23' 10" Elms
2	80' 23' 10" Elms
3	35' 30" Bush
4	65' 30" Bush
5	25' 8" Elms
6	21' 24" Catalpa
7	6' 52' B' Cherry
8	20' 52' B' Cherry
9	16' 40' 4" Maple
10	74' 40' 4" Maple

WOOD COUNTY
S.H. 53 SECTIONS C & B
R/W PLANS

8
9

SHAW'S
Lot 4
Lot 3

RIVER TRACT 77
T.3, U.S.R., PERRYBURG TWP.

SUBDIVISION

Lot 3

ROSEDALE

ADDITION

DIXIE GARDENS

HARTSDALE

SUBDIVISION

RIVER - ROSS

ADDITION

RIVER ROAD VINEYARDS

HARTSDALE

8
Rudolph & Hazel
Hazel
House
Hazel 126

9
William S. Deveraux
49
10
Henry J. Me

SUBDIVISION

HALSTED

HEIGHTS

SUBDIVISION

WOOD COUNTY
S.H. 53 SECTION B
R/W PLANS

10

P.I. Sta. 214+85.80
Found iron pipe.
Angle 31°-46' Lt.

CURVE DATA FOR RELOCATION

$P. I = 213 + 96.72$ $T = 191.72'$
 $\Delta = 29^\circ - 57'$ $L = 314.37'$
 $D = 8^\circ - 0'$ $P.C. = 212 + 05$
 $R = 716.78$ $P.T. = 215 + 79.37$
Sta. 215+79.37 of Relocation = Sta. 216+00 of Original
RIVER TRACT 81
T3 U.S.R., ROSS TWP.

RIVER TRACT 80
T.3 U.S.R., ROSS TWP.

TREES			
NO	PLANT OUT	SIZE @	KIND
1	2	3	4
1	13	34	30" Ash
2	42	35	8" Ash
3	55	69	12" Maple
4	62	56	12" Elm
5	32	37	14" Box Elder
6	78	57	12" Maple
7	10	20	12" Box Elder
8	00	20	6" Elm
9	07	42	6" Catalpa
10	24	43	6"
11	62	62	2" Maple
12	23	62	2"
13	24	67	2"
14	37	60	2"
15	77	39	2"
16	84	48	3"
17	15	58	3"
18	30	42	2"
19	50	33	4" Mulberry
20	85	49	4"

P.I. Sta. 224+22.00
Found cross cut in
brick Pavement.
Angle 32°-01 Rt.

STA. 225 + 55 ± SURVEY =
STA. 225 + 31.93 ± CONST.
END OF PROJECT
S.H. 53 SEC. CPT. SEC. BPT.

RIVER TRACT 81
T.3 U.S.R., ROSS TWP.

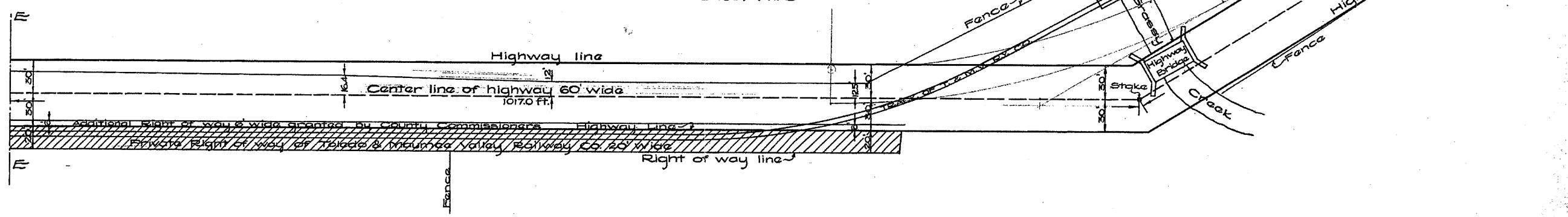
Scanned
July 1947

clip to 53 B

Map of the Public Highway
and the
Toledo & Maumee Valley Railway
across
Ross Township, Wood County
Ohio

Scale-1 in.=50 ft.

Sheet No 5



Map of the Public Highway
and the
Toledo & Maumee Valley Railway
across
Ross Township, Wood County
Ohio

Scale-1 in.=50 ft.

Sheet No 4

